



**RFF STAINLESS STEEL  
STOP CHECK VALVES  
3/8" TO 1" CONNECTION SIZES**

**DESCRIPTION**

These stop-check valves are constructed of a Stainless Steel body with an aluminum seal-cap. Internal parts are similar to standard steel valves. Weld in-line bodies are top entry for service and maintenance.

The nominal pressure rating is 580 psig (40 bar) with a temperature range of -58°F (-50°C) to 302°F (+150°C). Higher-pressure models, rated for 942 psig (65 bar), are also available upon request with a temperature range of 58°F (-50°C) to 230°F (+110°C).

RFF stop-check valves can be operated simultaneously as both stop-valves and check valves. It is possible to lock them in the closed position which will cause them to act as stop-valves.

The size of a stop-check valve on an installation should be carefully selected, especially in NH3 applications. The stop-check valve should not be oversized or it may start to "chatter" when operating.

RFF stop-check valves are identical in design to standard valves. Maintenance and installation procedures are identical to the corresponding RFF standard valves.

Stop-check valves can be identified by a groove machined above the bonnet.

**STAINLESS STEEL  
STOP CHECK VALVES FOR  
INDUSTRIAL REFRIGERATION  
3/8" TO 1"**

- **Globe And Angle Valve Models Available**
- **Safe Working Pressure (SWP) 580 psig (40 Bar); High Pressure Models Available**
- **Rated for -58°F (-50°C) to 302°F (+150°C)**
- **For NH<sub>3</sub> And Other Approved Refrigerants**
- **Schedule 40 Butt Weld (BW) Standard; Socket Weld (SW) Available Upon Request**



*3/4" Stainless Steel Globe  
Stop Check Valve w/ Handwheel;  
Butt Weld (shown)  
(Part # SS-GCK-075-SC-BW)*

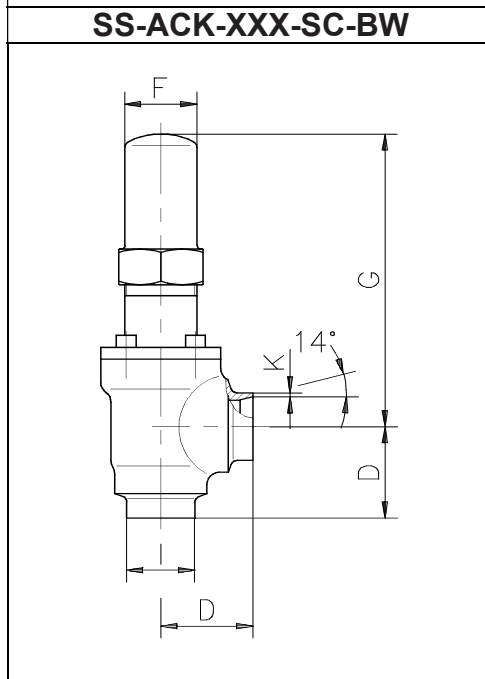
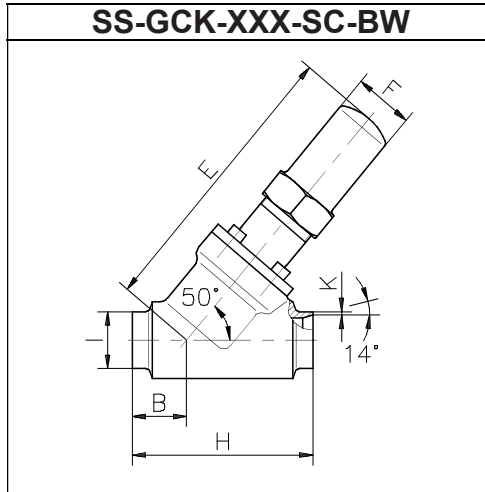
<b>Ordering Information</b>					
<b>Shut-Off Valves</b>	<b>Valve Material</b>	<b>Type</b>	<b>Size</b>	<b>Control*</b>	<b>Connection*</b>
Options	Stainless Steel (Only)	Angle / Globe (ACK / GCK)	3/8", 1/2", 3/4", 1" (038, 050, 075, 100)	Seal Cap / Handwheel	Butt Weld / Socket Weld
<b>Part #</b>	<b>SS -</b>	<b>GCK -</b>	<b>100 -</b>	<b>SC -</b>	<b>BW</b>
Decoded	Stainless Steel	Globe Stop Check	1"	Seal Cap	Butt Weld

*\*Seal Cap & Schedule 40 Butt Weld (BW) Standard;  
Socket Weld (SW) available (contact factory)*



# RFF STAINLESS STEEL STOP CHECK VALVES

## 3/8" TO 1" CONNECTION SIZES CONTINUED



SPRING STRENGTH FOR STOP CHECK VALVES (METRIC)			
PORT SIZE (mm)	START OPENING PRESSURE (bar)	END OPENING FORCE (DaN)	SEAT AREA (cm <sup>2</sup> )
10/15	0.093	0.3	2.54
20/25	0.053	0.49	6.157

SPRING STRENGTH FOR STOP CHECK VALVES (STANDARD)			
PORT SIZE (in)	START OPENING PRESSURE (psi)	END OPENING FORCE (in/lbs)	SEAT AREA (in <sup>2</sup> )
3/8" / 1/2"	1.348	2.655	.393
3/4" / 1"	0.768	4.336	.954

DIMENSIONS IN INCHES											
Port Size	A*	B	C*	D	E	F	G	H	I	J	K
3/8"	5	1	4-3/8	1-1/2	5-3/8	1-1/8	4-3/8	3-3/8	5/8	2	1/16
1/2"	5	1	4-3/8	1-1/2	5-3/8	1-1/8	4-3/8	3-3/8	7/8	2	1/16
3/4"	6-3/8	1-1/4	5-3/8	1-3/4	6-3/4	1-3/8	5-3/4	4-3/8	1	2-3/4	1/16
1"	6-3/8	1-1/4	5-3/8	1-3/4	6-3/4	1-3/8	5-3/4	4-3/8	1-3/8	2-3/4	1/16

\*Dimensions valve open

DIMENSIONS IN MILLIMETERS											
Port Size	A*	B	C*	D	E	F	G	H	I	J	K
10	128	25	112	39	136	28	112	85	17.2	50	2
15	128	25	112	39	136	28	112	85	21.3	50	2
20	161	33	136	46	171	36	146	110	26.9	70	2
25	161	33	136	46	171	36	146	110	33.7	70	2

\*Dimensions valve open

All rights reserved to alter product dimensions, specifications, materials, and pricing without notice.

